



**CAPABILITIES STATEMENT**



## Firm Overview

At Epsten Group, we pride ourselves on being a pioneer for sustainability in the built environment. As a multi-disciplinary firm that combines sustainable design, consulting, and commissioning services, collaboration is at the heart of what we do. Since our founding in 1991, our team of architects, engineers, building specialists, and wellness experts have helped our clients grow, sustain, and transform their environments through innovative and comprehensive solutions.

With a core mission to create a healthier and more prosperous world, we focus on building performance and occupant productivity by emphasizing wellness, sustainability, and net-zero energy design considerations to promote a more resilient future for generations to come.

In 2019 we moved our corporate headquarters to downtown Atlanta. To further express our commitment to the environment and our people, we hold six sustainability office certifications and two organization certifications, to our space. These certifications include:

- + LEED v4.1 ID+C – Gold
- + WELL v2.0 Pilot – Platinum
- + WELL Health- Safety Rated
- + WELL Equity Rated
- + LBC v3.1 Petal Certifications – v4.0 Materials Petal
- + Fitwel v2.1 – 2 Stars
- + RESET Air v2 - Commercial Interiors
- + Just. Label v2.0

## Leadership



**Bill D'Onofrio, AIA**  
Principal | Director of Operations



**Darren Draper, PE, CxA**  
Principal | Director of Commissioning



**Lauren Wallace, LEED Fellow, LFA, WELL AP**  
Principal | Director of Certifications & Consulting

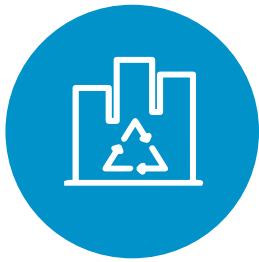
## JUST Epsten Group

JUST marks the beginning of a new era in corporate transparency. Epsten Group was one of the first companies in the Southeast to achieve a JUST Label for Transparent Operations Practice. The JUST program, spearheaded by the International Living Future Institute, is a voluntary disclosure tool for organizations, specifically geared toward facilitating socially just and equitable organizations.



## » Areas of Expertise

Our services remain flexible to meet the growing demand for a sustainable, healthier future. No matter the industry or facility type, we have the expertise to help you build or enhance your space, prioritizing its occupants and the environment.



### **SUSTAINABILITY CONSULTING**

When facing complex sustainability questions, we work with you to develop the right plan for your company, your project, and your goals.



### **BUILDING & PRODUCT CERTIFICATIONS**

Distinguish yourself from the competition and increase marketability with third-party validation of your products and practices.



### **ARCHITECTURE & INTERIOR DESIGN**

With an in-depth knowledge of sustainable design and expertise in multiple building types, our architects create comprehensive, forward thinking projects, with a focus on individual needs.



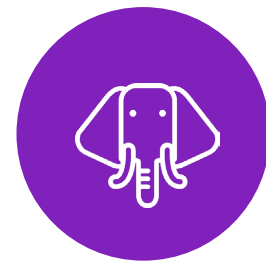
### **BUILDING COMMISSIONING**

Protect your investment and optimize building performance with third-party verification that eliminates system inadequacies and failures.



### **BUILDING ENCLOSURE SERVICES**

There are many risks associated with building enclosure failures. Our mission is to overcome these challenges, eliminate your risk, and maximize your return on investment.



### **ZOO DESIGN AND PLANNING**

We design intuitive and sustainable zoo facilities and Master Plans to ensure your animals thrive at the delicate intersection of visitor experience and animal wellness.

# Sustainability Consulting

As experts in multiple rating systems and design, we work with your organization to develop a comprehensive plan of sustainable solutions for your space and core business practices.



## LEED Consulting



Our in-house LEED experts work with building owners and design teams to define the most efficient path to certification. As third-party verifiers for the GBCI, we excel at projects that overlap multiple rating systems alongside LEED, utilizing our extensive knowledge of every iteration of the rating system.

## WELL Consulting



The WELL Building Standard is a flexible building standard focused on improving the health and wellness of building occupants through better designs, operations, and organizational policies. Our team has a deep understanding of WELL's performance-based verification system, providing expertise on how to attract, retain, and increase productivity of the users who inhabit the spaces you create.

## FITWEL Consulting



Created by the Centers for Disease Control, Fitwel includes design and operational principals aiming to improve health for building occupants in either new or existing facilities. We are proud to be leading the movement as Fitwel Champions.

## Sustainability Consulting

### Living Building Challenge Consulting



LBC is essential to achieve a truly sustainable project, though it's one of the most rigorous and challenging certification programs due to its complex requirements. Creating a space that adheres to LBC takes a substantial investment of time and effort. We are eager to share the knowledge we've gained on the first Living Building projects in the Southeastern US.

### ESG Consulting



An Environmental, Social, and Governance (ESG) Report is an in-depth document published annually by an organization to inform their stakeholders, clients, and team members of all the actionable steps they're taking to be better stewards to people and the planet by reporting on data points like climate impact, carbon footprint, diversity, equity & inclusion, board ethics, company culture, and more. Our team of experts provides consulting that meets you wherever you are in your reporting process.

### Parksmart Consulting



Parksmart is the only certification program in the world that defines, measures, and recognizes sustainable parking garages. Both new and existing parking structures can achieve Parksmart certification by activating sustainable practices in parking structure management, programming, design, and technology.

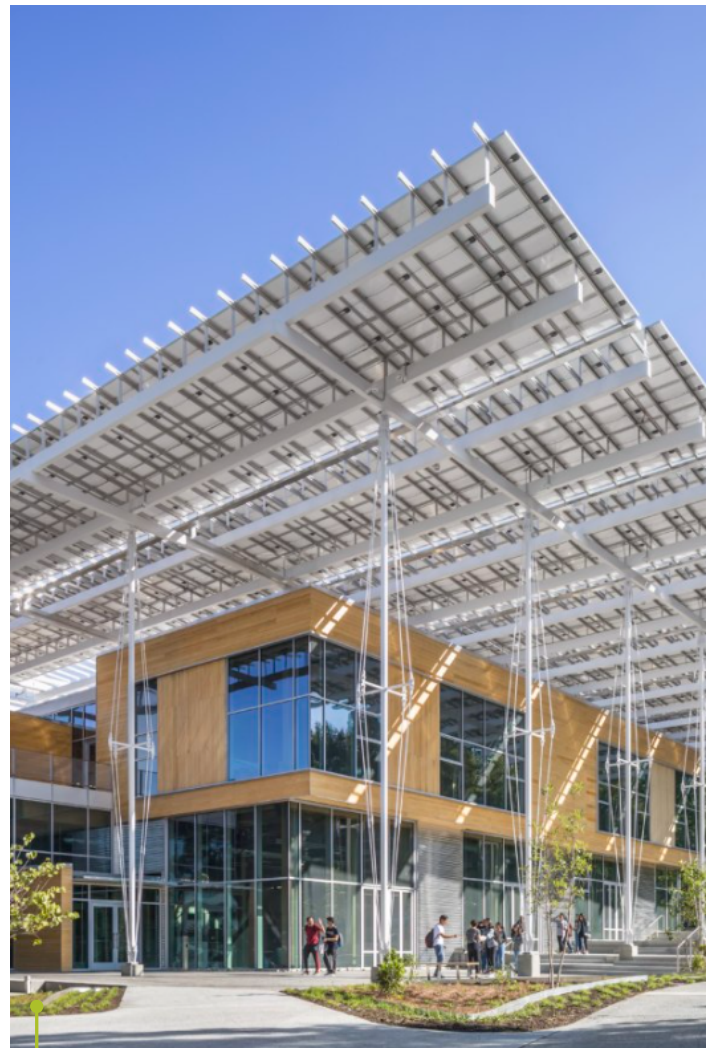
### Building System + Enclosure Modeling

The energy modeling experts who act as our third-party verifiers are the same people who lead our projects, creating healthier spaces with increased performance savings and outdoor air ventilation rates. Our team can handle all your project needs, whether you are working toward Net Zero Certification, Georgia Peach, or Building Enclosure Optimization.

### SITES Consulting



SITES recognizes the critical importance of landscapes in the built environment and how they benefit project owners, building occupants, communities, and the environment. SITES is available to locations with or without buildings and to consulting teams working in collaboration with registered landscape architects.



GEORGIA TECH KENDED A BUILDING FOR INNOVATIVE SUSTAINABLE DESIGN  
LOCATION: ATLANTA, GA  
SERVICES PERFORMED: COMMISSIONING, PEER ENERGY MODELING (NET ZERO EUI), INDOOR AIR QUALITY TESTING

### » Our Value

Industry pioneers to our core, we make it our business to be among the first. Continually pushing the boundaries, we've walked many clients through their own firsts too.

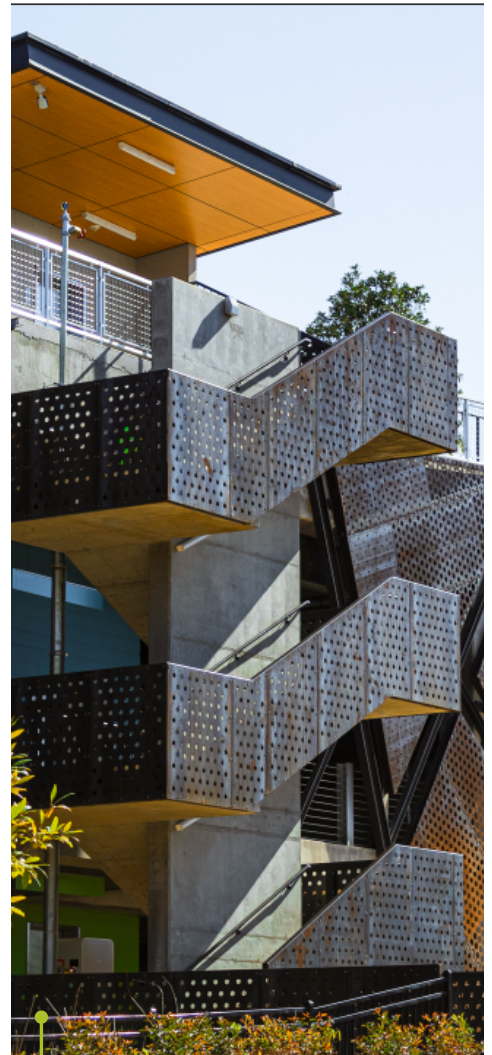
- + FIRST Interior Design project designed to achieve 6 certifications — Epsten Group HQ
- + FIRST Petal Certified project in the Southeast — Mohawk Light Lab
- + FIRST Consulting Firm to hold the JUST Label in the Southeast
- + FIRST Parksmart project in the Southeast — Grant Park Gateway
- + FIRST WELL Performance Verification Testing Organization in the Southeast
- + FIRST Credit Union to achieve Fitwel certification — Georgia's Own Credit Union
- + FIRST LEED Gold manufacturing facility in Suzhou, China — adidas Suzhou 2
- + FIRST LEED Certified project for the City of Atlanta, Parks and Recreation Department — MLK Recreation & Aquatic Center
- + FIRST LEED Gold project for City of Atlanta — MLK Recreation & Aquatic Center
- + FIRST LEED Gold project for Fulton County — Southeast Atlanta Library
- + FIRST Aetna project to achieve LEED — Aetna Atlanta
- + FIRST LEED Double Platinum project in the world — former EGI HQ

This is your journey, and our mission is to make it a success. We are your true North that you can rely on to guide your entire team and propel the project forward.

At the end of the project, you will feel accomplished with a story to tell. Because being the first, you have the best stories to tell. The story makers are the hurdles, strides, and obstacles that ultimately led to success, impact, and inspiration for the future of the built environment.



We stay at the forefront of all new rating systems and technologies so that our clients receive the most informed results.



GRANT PARK GATEWAY  
LOCATION: ATLANTA, GA  
SERVICES PERFORMED: COMMISSIONING  
AND LEED CONSULTING

### » Multiple Rating System Approach

We consider ourselves lucky to have been a part of thousands of projects across the globe accounting for **4 billion** square feet of space in more than **55** different countries and counting. With that kind of experience under our belts, we sum it up by saying we are the multiple rating system experts. Besides... **this is what we do, day-in and day-out.**



**55+**  
**COUNTRIES**



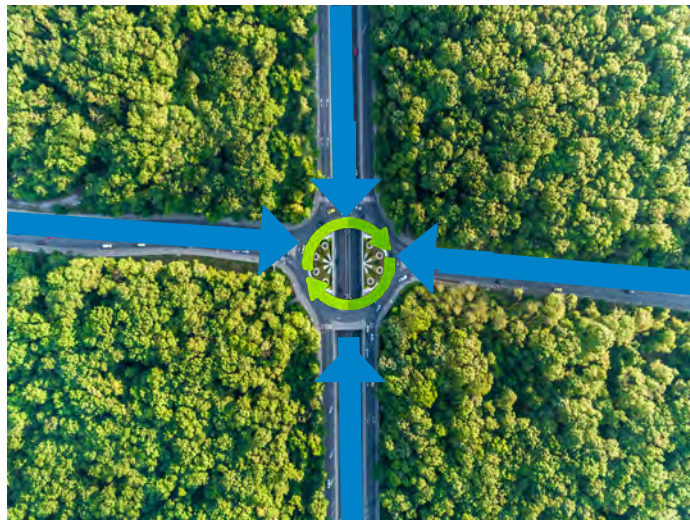
**15,000+**  
**PROJECTS**



**4 BILLION**  
**SQUARE FEET**

### CROSSWALKS

Streamlining the certification process by identifying synergies between rating systems is where our team excels. Despite their different areas and focus, each of these rating systems are made to complement each other and share a considerable amount of overlap. We simplify your efforts and identify the best strategy toward achieving multiple certification for your space and its inhabitants.



LEED

WELL

FITWEL

LBC

RESET

# Sustainability Consulting Portfolio

## Grant Park Gateway

Atlanta, GA



COMMISSIONING  
LEED CONSULTING  
PARKSMART CONSULTING  
SITES CONSULTING  
BUILDING ENCLOSURE CONSULTING

LEED SILVER CORE + SHELL  
PARKSMART BRONZE  
SITES GOLD  
MULTI- CERTIFICATIONS  
CROSSWALKS

## Georgia's Own Credit Union Headquarters

Atlanta, GA



FITWEL V2.0 CONSULTING  
FITWEL V2.1 RECERTIFICATION CONSULTING

FITWEL 3 STARS



# Sustainability Consulting Portfolio

## Martin Luther King Natatorium

Atlanta, GA



LEED CONSULTING  
ENCLOSURE CONSULTING + TESTING

LEED GOLD

## Anthem Technology Center

Atlanta, GA



LEED CONSULTING FOR THE CORE AND SHELL  
FUNDAMENTAL AND ENHANCED COMMISSIONING  
ENERGY MODELING

LEED BD+C V4: CORE AND SHELL SILVER

## Building and Product Certifications

Increase marketability of your asset and distinguish yourself from the competition with third-party validation of your products and practices.



### WELL Performance Verification Pre-Testing

Pre-testing involves conducting tests within the project space prior to Performance Verification Testing to identify and mend any gaps in WELL Building Standard compliance. Pre-testing is extremely beneficial in understanding the baseline conditions of existing spaces and reducing the chances of curative action.



### WELL Performance Verification Testing

To achieve WELL Certification, all projects must pass on-site performance testing, called performance verification. Epsten Group is an official WELL v2 Performance Testing Organization as endorsed by IWBI. We work directly with reviewers at the GBCI to provide test results for your project during the WELL certification process.



### Zero Energy Certification

Zero Energy Certification certifies that the building is demonstrating zero energy performance through harnessing on-site renewable energy from the sun, wind, or earth. It celebrates a significant accomplishment and differentiates both the building and those responsible for its success. Epsten Group would verify that all of the requirements of the International Living Future Institute's Zero Energy Certification are being met.

Designing for sustainability and wellbeing is at the core of our work.



GRANT PARK GATEWAY  
LOCATION: ATLANTA, GA  
SERVICES PERFORMED: COMMISSIONING AND LEED CONSULTING

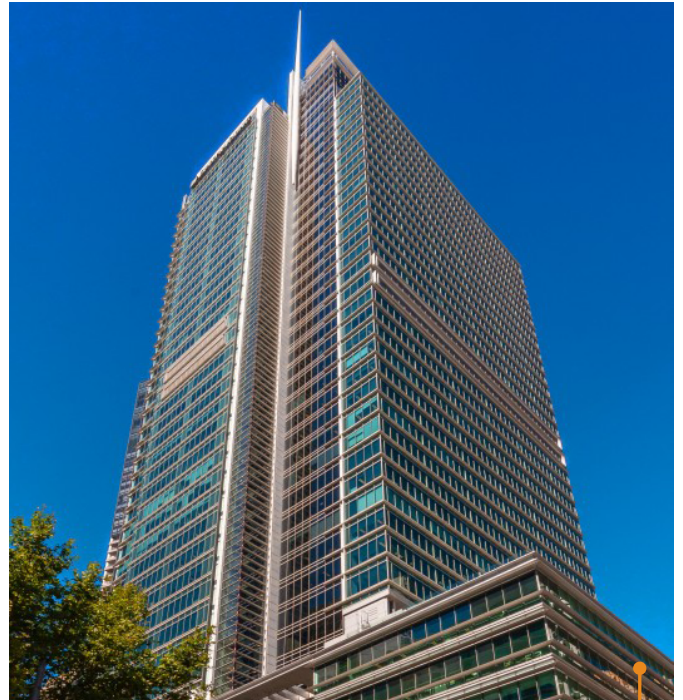
# Building and Product Certifications Portfolio

## Ernst & Young Tower

Atlanta, GA



WELL AT SCALE  
WELL PERFORMANCE TESTING



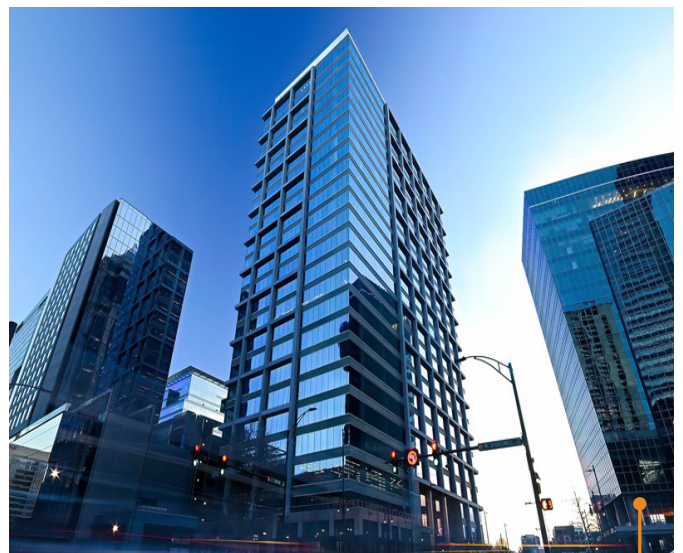
WELL HEALTH SAFETY RATED

## Ally Charlotte Center

Charlotte, NC



WELL CORE PERFORMANCE TESTING  
WELL PRE-TESTING AND TESTING



WELL CORE V1 GOLD  
WELL V2 PILOT ATTEMPTING GOLD

# Building and Product Certifications Portfolio

## Delos Headquarters

New York, NY



WELL V2 PERFORMANCE TESTING  
WELL PERFORMANCE RATING PERFORMANCE TESTING



WELL V2 PLATINUM

## One World Observatory

New York, NY



SUSTAINABILITY CONSULTING



LEED PLATINUM

# Architecture & Interior Design

At Epsten, we make sustainable design accessible and attainable for each unique space. Our multidisciplinary in-house team curates designs at the intricate intersection of function, aesthetics, and cost. We take pride in managing projects that create and maintain meaningful, lasting impacts, with unmatched artful craftsmanship at the core of all we do.

## Core competencies

- + Adaptive Reuse
- + Community Centered Design
- + Offices
- + Zoo Design
- + Event Spaces
- + Net Zero
- + Mixed Use

## Aesthetics

- + Biophilic Design
- + Low-impact materials
- + Client-centered
- + Reclaimed materials
- + Natural Daylight
- + Views
- + High Contrast Colors



## Architecture

We design spaces in which both inhabitants and the environment can flourish, prioritizing solutions that emphasize occupant health and happiness, conserve natural resources, and celebrate local communities.



## Interior Design

The interior environments we cultivate are critical factors to our health and well-being. Our interior design specialists craft colorful and masterful client-centric designs that help building occupants become healthier, happier, and more productive in unique, intuitive spaces.

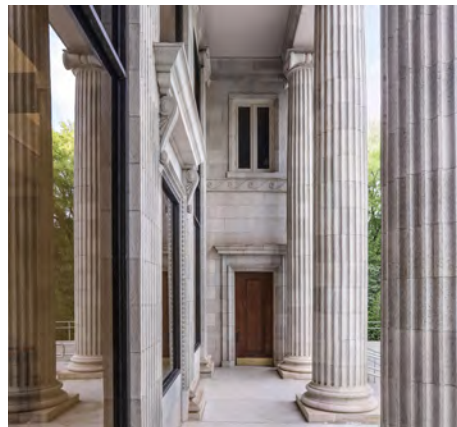


## Zoo Design

We employ a holistic approach to zoo design, prioritizing the animal's mental and physical needs while also enhancing their ability to thrive under human care.



VICTORY CHURCH



ZOO ATLANTA SAVANNA HALL



IRWIN STREET TOWNHOMES

Epsten Group New Headquarters

Atlanta, GA



BUILDING ENCLOSURE + SYSTEMS COMMISSIONING  
ARCHITECTURE + INTERIOR DESIGN  
LEED CONSULTING  
ENERGY MODELING  
ENVIRONMENTAL LIFE-CYCLE ASSESSMENT

LEED ID+C V4.1 GOLD  
WELL V2 PLATINUM  
LBC MATERIALS PETAL CERTIFICATION  
FITWEL 2 STARS  
RESET AIR V2.0

Inman Park Cooperative Preschool

Atlanta, GA



ARCHITECTURE + INTERIOR DESIGN

Victory Church - Midtown

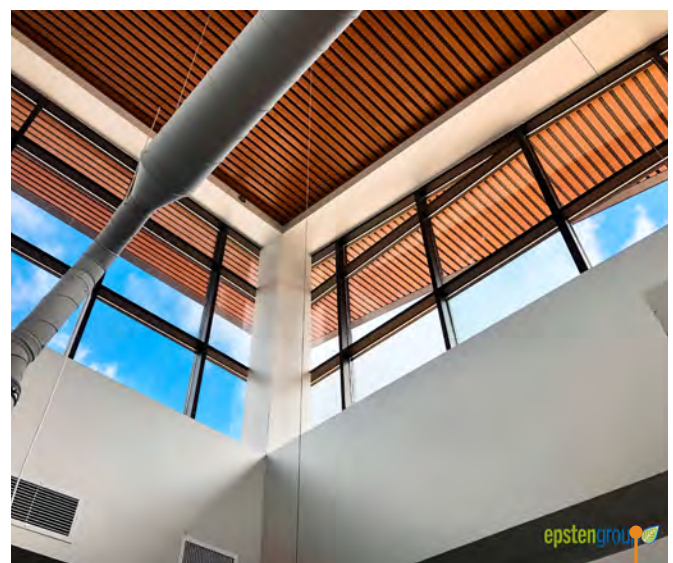
Atlanta, GA



ARCHITECTURE + INTERIOR DESIGN

Stepan Agronomic Laboratory Complex

Winder, GA



BUILDING ENCLOSURE + SYSTEMS COMMISSIONING  
ARCHITECTURE + INTERIOR DESIGN  
LEED CONSULTING  
ENERGY MODELING  
ENVIRONMENTAL LIFE-CYCLE ASSESSMENT

LEED SILVER

Savanna Hall

Atlanta, GA



ARCHITECTURE + INTERIOR DESIGN  
HISTORIC PRESERVATION



# Zoo Design

Our experience in sustainable design and construction since our founding in 1991 naturally led us to the conservation-minded world of zoological gardens. We now have over twelve years of experience designing exhibits and support facilities for species and zoos, both large and small. Our experience is further supplemented by our Zoo Exhibit Consultant, Ursa International, who brings more than 40 years of experience in environmental and zoological design.

## Core competencies

- + Habitat Design
- + Master Planning
- + Architecture
- + Interior Design
- + Sustainability Consulting
- + Community Centered Design



### Passion + Purpose

We love what we do. Some might say we're passionate about it, but we say it goes much deeper than that. We work not just for the love of architecture and design, but because we are driven to improve the quality of life for animals, people, and the environment for generations to come.



### Evidence-Based Approach

We apply the latest science and research to make our buildings and exhibits stronger, more sustainable, and more efficient. But we also dig deeper to understand how the habitats we design will impact animal behavior. Our animal-centric, holistic approach empowers us to understand, envision, and design solutions that encourage behavioral freedom and enrichment.



### Wellness-Focused Design

Utilizing our Wellness Mind Maps, we ensure every element of animal wellness for each unique species is considered and maximized in the project design. By analyzing each category of wellness, from the most acute physical needs of air and water to the most stimulating mental needs of choices and challenges, we create habitats conducive to comfort and growth.



OKLAHOMA CITY ZOO AND BOTANTICAL GARDEN GALAPAGOS TORTISE EXHIBIT



ZOO ATLANTA TIGER HABITAT



ZOO ATLANTA ZAMBEZI ELEPHANT CENTER

### Zoo Atlanta, Savanna Hall

Zoo Atlanta Corporate Offices and Event Facility

Atlanta, GA



With expansive windows and natural daylighting, the historic transformation of Savanna Hall brings the visitor experience up close and personal to the wild with sweeping views overlooking the African Savanna landscape. The renovation involved the conversion of the historic Grant Park Cyclorama into a new 69,764 SF events destination facility with specialty kitchens equipped for kosher catering as well as a new home for Zoo Atlanta's administrative offices.

### Zoo Atlanta, Grand New View + Zambezi Elephant Center

African Elephant Breeding Facility on Exhibit, Meercat, Giraffes, Zebras, Ostriches, Warthogs

Atlanta, GA



Grand New View, a two acre park expansion, included an innovative 20,000 SF elephant breeding barn and two outdoor habitats, earning the prestigious rating of LEED Gold. [Optional based on room: This state of the art facility allowed Zoo Atlanta to bring in a new bull elephant and two additional females, with room for up to four more in the future.

## Oklahoma City Zoo and Botanical Garden, Master Planning

Oklahoma City, OK



Ursa International was responsible for Concept Planning and programming for the 2017 Comprehensive Plan, leading to a \$71,000,000 budget allocation for new facilities across the zoo that are scheduled to complete this year.

## Kuwait City Murouj Farm, Petting Paddock

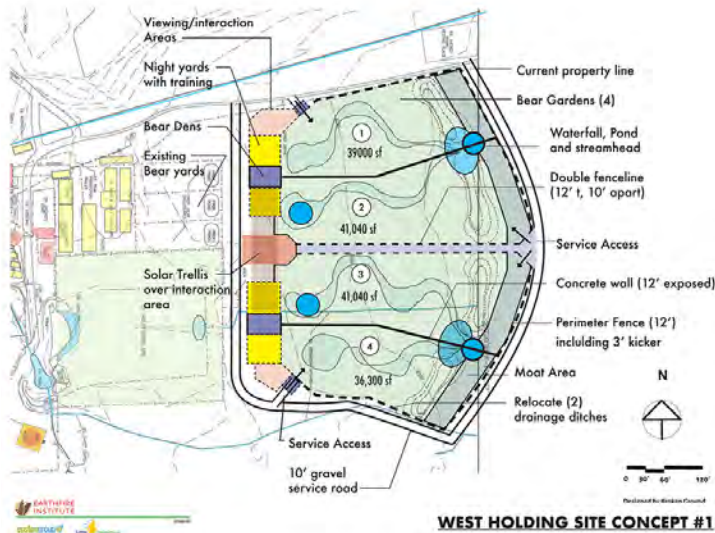
Sabah Al Salem, Kuwait



Ursa, in partnership with Epsten, was responsible for Concept Planning and programming for the 2019 design effort for this innovative facility that opened to visitors earlier this year.

## Earthfire Institute

Driggs, ID



Earthfire's new bear gardens will give each bear the chance to do what they do most naturally—from foraging for native plants and berries to cooling off and playing in their own freshwater pool.

## Oklahoma City Zoo and Botanical Garden, Andean Condor and Azalea Garden

Oklahoma City, OK



The Andean Condor project added several new aviary structures to better serve the condors and also included renovating existing facilities for better animal, caretaker, and visitor experiences.

## Building Commissioning

Commissioning is a third-party, independent service to verify that building systems operate as intended. As our buildings and systems become more complicated, the commissioning process must go further. Protecting your investment at every opportunity, we find practical solutions to system inadequacies and failures.

### New Building Commissioning

#### MEP Commissioning

With diverse backgrounds in MEP services, our experts verify the performance of mechanical, electrical, and plumbing systems for optimal facility operation.

#### Building Enclosure Commissioning

Our team focuses on the project's exterior shell to ensure the enclosure has thermal integrity, as well as water and air tightness.

### Existing Building Commissioning

#### Retro-Commissioning

When your building doesn't operate as intended, you want to fix the problem. Our commissioning agents troubleshoot your systems to identify problems and propose practical solutions to improve energy performance, reduce work orders, and improve occupant comfort.



## Commissioning Services

We are uniquely qualified to provide commissioning services for three leading reasons:



1. Our holistic, team-oriented approach



2. Expertise in both building systems and building enclosure to ensure optimal performance



3. Our understanding of the unique challenges and demands for multiple building and project types



We differentiate ourselves by our commitment to protecting your investment with performance verification you can trust. We prioritize early involvement with our agents and project teams, utilizing the tools and processes outlined below, to develop a whole building quality assurance process customized to suit the needs of each unique project.



### Technical Expertise

Our team members have extensive knowledge of building systems and design as well as the energy-efficient strategies required to optimize performance and functionality of all building components. With vast experience working with diverse building and project types, we know how to quickly resolve performance issues resulting in less maintenance and greater reliability.



### Active Communication

We pride ourselves on being able to adapt and work with clients in a manner that is conducive to fostering strong lines of communication between all members of the project team. By maintaining active lines of communication, we provide a transparent forum for information to flow freely to those who need it. The result is a commissioning process that is streamlined, delivering unparalleled value and performance.



### Technology

CxAlloy is a user-friendly, cloud-based commissioning tool we utilize to provide a real-time view of all Cx activity. As commissioning deliverables are complete, this tool presents updates instantly, allowing us to provide enhanced levels of service beyond what was previously possible.

Our team utilizes a variety of construction software tools to strengthen collaboration between project teams, including Bluebeam sessions, e-Builder, BIM 360 field, and Procore web-based tracking systems. We also perform design reviews of BIM models and participate in BIM meetings in early construction to discuss appropriate modeling techniques to ensure sufficient access to MEP equipment and components. This is beneficial not just for coordination and clash detection, but for long-term operations as well.

# Building Commissioning Portfolio

## Porsche North American Headquarters

Atlanta, GA

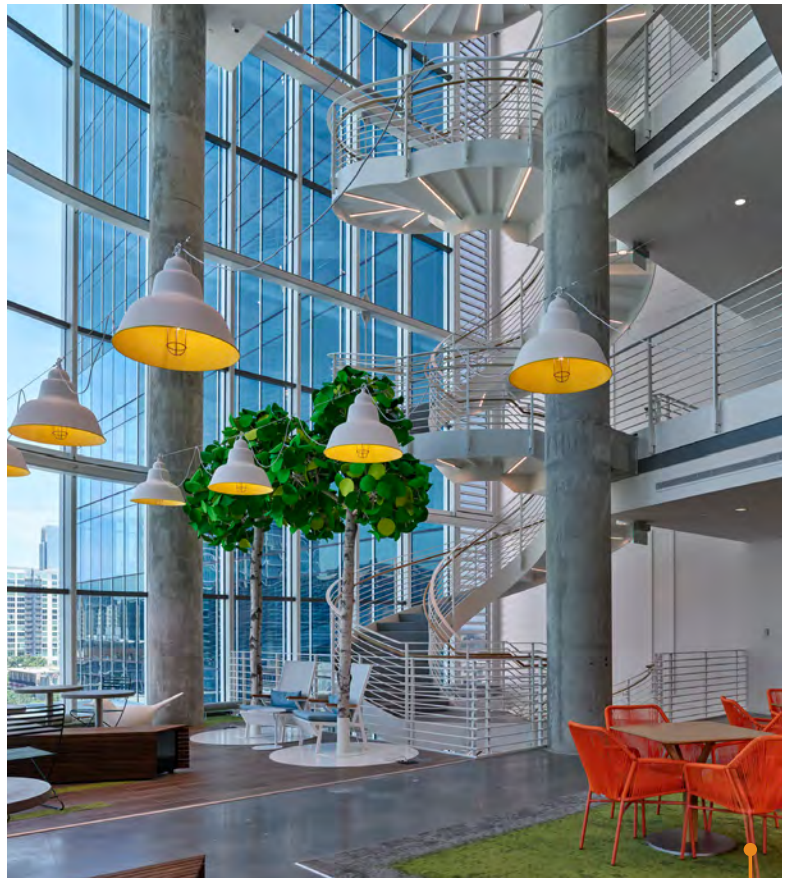


FUNDAMENTAL + ENHANCED COMMISSIONING

LEED GOLD

## Coda Tech Square

Atlanta, GA



COMMISSIONING  
LEED CONSULTING

LEED PLATINUM

# Building Commissioning Portfolio

## Akli Arts Center

Atlanta, GA



COMMISSIONING

LEED GOLD

## Georgia Southern University Center for Engineering and Research

Statesboro, GA



COMMISSIONING  
GEORGIA PEACH CONSULTING  
ENERGY MODELING

GEORGIA PEACH



# Building Commissioning Portfolio

## Oglethorpe University Cousins Center

Brookhaven, GA



COMMISSIONING



TARGETING LEED

## Georgia State University Science Park Phase II

Atlanta, GA



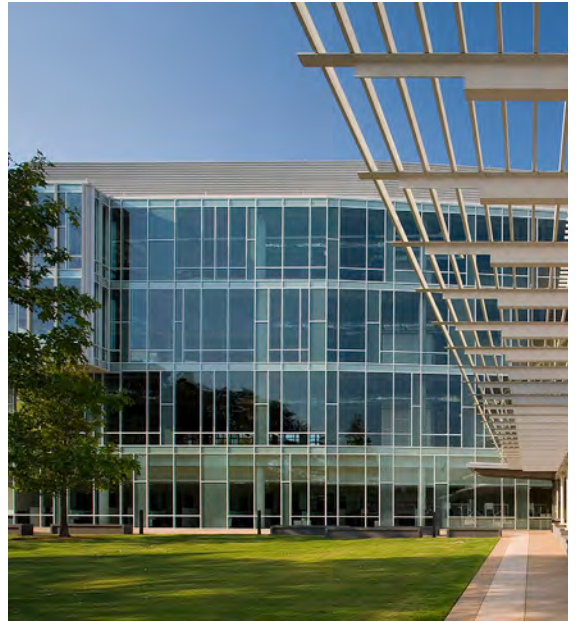
COMMISSIONING



## Building Commissioning Portfolio

### Georgia Tech Cell Manufacturing Facility

Atlanta, GA



COMMISSIONING

### Truist Park

Atlanta, GA



FUNDAMENTAL + ENHANCED COMMISSIONING

LEED SILVER

**Georgia Tech Kendeda Building For Innovative Sustainable Design**

**Atlanta, GA**



**PERFORMANCE- PERIOD COMMISSIONING  
PEER ENERGY MODEL (NET ZERO EUI)  
PRE- OCCUPIED INDOOR AIR QUALITY TESTING  
PERFORMANCE- PERIOD INDOOR AIR QUALITY TESTING**

**LIVING BUILDING CHALLENGE V3.1 CERTIFIED  
LEED PLATINUM  
PRODUCING 200% ENERGY CONSUMPTION**

**ASHRAE Headquarters**

**Peachtree Corners, GA**



**COMMISSIONING**

**TARGETING NZEB CERTIFICATION**

## Building Enclosure Services

An effective building enclosure forms a barrier that protects and preserves user regulated interior environments from uncontrollable exterior climates. The enclosure consists of a variety of materials and components including roofing, fenestration, exterior walls, and waterproofing, that must work in unison to achieve desired performance objectives. Our experts have extensive knowledge and experience coordinating the best approach for constructability, long term durability, and superior performance.

### Consulting Services

- + Condition Assessments and Surveys
- + Forensics, Failure, and Water Intrusion Investigations
- + Repair, Remediation, Rehab, or Restoration Design
- + Design and Submittal Reviews
- + Quality Assurance Construction Monitoring
- + Hazardous Material Sampling (Lead and Asbestos)
- + Insurance Claim and Litigation Support
- + Reserve Studies and Maintenance Plans
- + Historic Preservation

### Additional Services

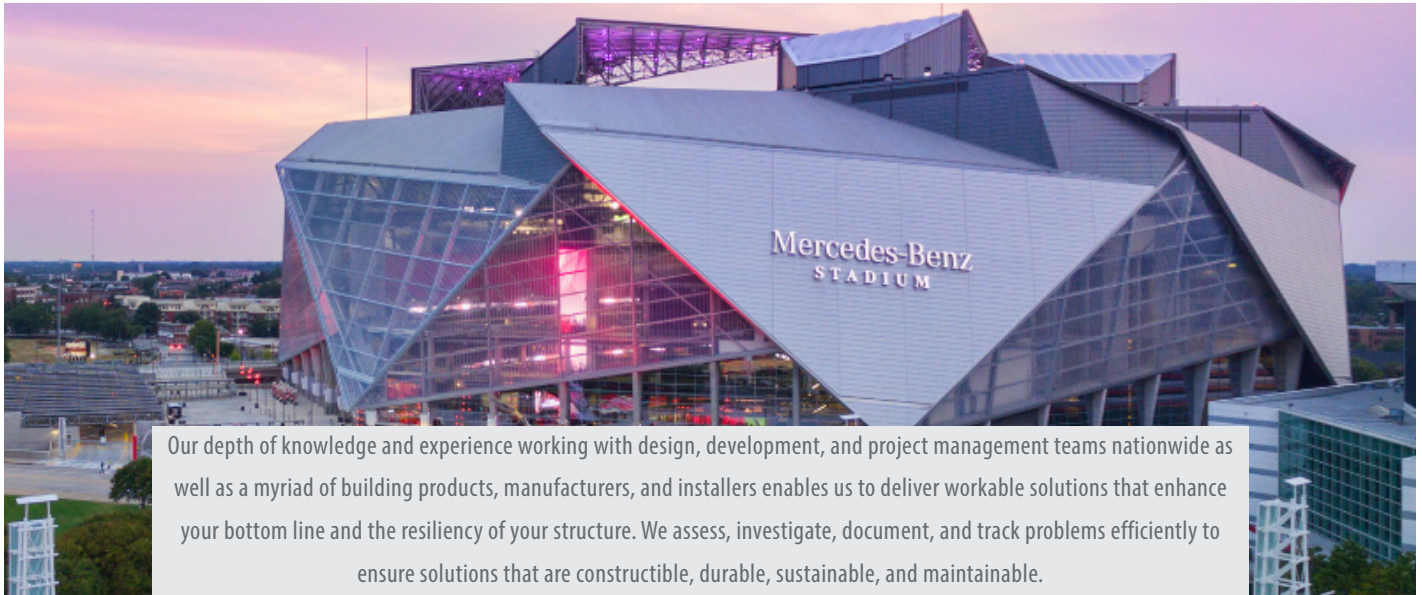
- + Energy Modeling
- + Indoor Air Quality Testing
- + Life Cycle Assessments

### Testing Services

- + AAMA 501.2 Spray Nozzle Testing
- + AAMA/ASTM Air and Water Infiltration Testing
- + Level II Infrared Thermography Services
- + Whole-Building Blower Door Testing
- + Infrared, Bubble & Dome, and Smoke Tracer Air Leak Testing
- + Electronic Leak Detection Services
- + Infrared Drone Surveys
- + Wind Uplift Analysis
- + Material Thickness and Adhesion Sampling
- + Impedance Roof Moisture Scan Testing
- + Drain Plug Flood Testing
- + Additional Destructive & Non-Destructive Tests Available



### » Building Enclosure Value Proposition



#### Superior Solutions

We set the bar high, no matter the project size. We help our clients and partners set expectations and achieve the highest quality, sustainable building enclosures with minimal maintenance or repair. Through the utilization of internal policies, experience evaluating failures, and ongoing research of industry standards, we guarantee quality and consistency, paving the way for informed design and construction decisions.



#### Diverse Project + Team Experience

Throughout the years, we have assembled a team of industry leading experts from an array of diverse backgrounds that have touched nearly every building and project type imaginable: new construction, older buildings, design review and development, in-house testing, and more. Our holistic breadth of services and wealth of experience allow our seasoned professionals to quickly identify and deliver the most effective interventions for your structure and its environment.



#### Human-Centric Approach

We go above and beyond to earn your trust *and* your business. We integrate a variety of software, systems, and best practices, recognizing that our role as part of a team and communication with all parties are paramount to project success. We take pride in developing long-standing relationships by adding value to your project and offering comprehensive solutions that simplify and streamline your efforts.



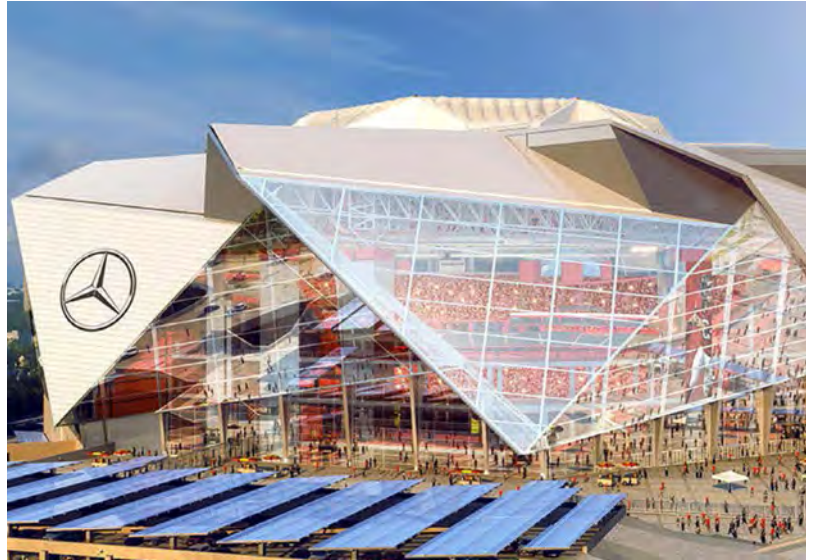
#### Foresight + Timeliness

Given our experience as BECx agents, QA/QC, or testing reps during new construction projects and forensic investigators on existing projects, we are well equipped to foresee challenges before they occur. We ensure project teams vet potential challenges during the design phases, limiting the impact on time and budget during construction. But when conflicts arise, we stress timely communication to ensure issues are resolved quickly and handled with care.

# Building Enclosure Services Portfolio

## Mercedes Benz Stadium

Atlanta, GA



TRADITIONAL MEMBRANE ROOFING EVALUATION AND ASSESSMENT  
BELOW-GRADE WATERPROOFING CONSULTING

## Universal Health Services, South Texas Health System

Edinburg Tower Expansion

Edinburg, TX



BUILDING ENCLOSURE CONSULTING  
CONDITION ASSESSMENT AND DESIGN REVIEW  
WINDOW, SEALANT, AND ROOF TESTING  
AIR BARRIER AND EIFS SAMPLING

# Building Enclosure Services Portfolio

## One Phipps Plaza

Hotel, Office Tower, Food Building, and Fitness Building

Atlanta, GA



BUILDING ENCLOSURE COMMISSIONING AND TESTING  
DESIGN REVIEW: OPR, BECX SPEC  
WINDOW, SEALANT, AIR BARRIER, CLADDING, AND ROOF TESTING

## Canterbury Court

Renovation of Buildings A, B, C, and Expansion of Buildings D & E

Atlanta, GA



BUILDING ENCLOSURE COMMISSIONING AND TESTING  
MEP COMMISSIONING  
WINDOW, SEALANT, AIR BARRIER, EIF, WATERPROOFING AND ROOF TESTING



**epstengroup**   
A Salas O'Brien Company



101 Marietta St NW  
Suite 2600  
Atlanta, GA 30303



Phone:  
404.577.0370  
Email:  
in@epstengroup.com



Website:  
epstengroup.com